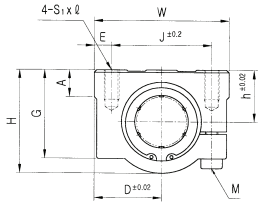
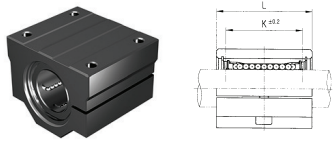


| SCJ ADJUSTABLE ALUMINUM CASE UNIT |

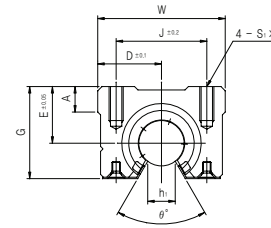
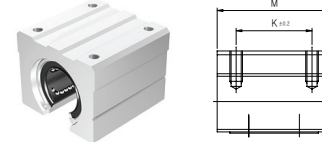


Aluminum Case Unit(Adjustable type)	SCJ	20	UU	-	A	S
Nominal Shaft Diameter						
Seal	Blank : No Seal U : One Side Seal UU : Both Side Seal					
Retainer	Blank : Resin retainer(Standard) A : Steel retainer(High temperature)					
Ball type (by corrosion resistance)	Blank : High carbon bearing steel ball (standard) S : Stainless steel ball					

PART NUMBER	L/B	h	D	W	H	G	A	J	E	S1×Q	K	L	M	BASIC LOAD RATING(N) DYNAMIC(C)	STATIC(Cs)	OUTER DIAMETER	WEIGHT (gf)
SCJ10UU	LM10UUAJ	13	20	40	26	21	8	28	6	M5×12	21	35	M4	370	540	Φ10	90
SCJ12UU	LM12UUAJ	15	21	42	28	24	7.4	30.5	5.75	M5×12	26	36	M4	410	590	Φ12	112
SCJ13UU	LM13UUAJ	15	22	44	30	24.5	8	33	5.5	M5×12	26	39	M4	500	770	Φ13	123
SCJ16UU	LM16UUAJ	19	25	50	38.5	32.5	9	36	7	M5×12	34	44	M4	770	1170	Φ16	189
SCJ20UU	LM20UUAJ	21	27	54	41	35	11	40	7	M6×12	40	50	M5	860	1370	Φ20	237
SCJ25UU	LM25UUAJ	26	38	76	51.5	41	12	54	11	M8×18	50	67	M6	980	1560	Φ25	555
SCJ30UU	LM30UUAJ	30	39	78	59.5	49	15	58	10	M8×18	58	72	M6	1560	2740	Φ30	685
SCJ35UU	LM35UUAJ	34	45	90	68	54	18	70	10	M8×18	60	80	M6	1660	3130	Φ35	1100
SCJ40UU	LM40UUAJ	40	51	102	78	62	20	80	11	M10×25	60	90	M8	2150	4010	Φ40	1600
SCJ50UU	LM50UUAJ	52	61	122	102	80	24	100	11	M10×25	80	110	M8	3820	7930	Φ50	3350

Note 1) Dynamic load rating is based on the nominal life of 50km.
In case of 100km, C on the table need to be divided by 1.26
Ex) LM12 s 50km basis dynamic load rating C = 410N
LM12 s 100km basis dynamic load rating C₁₀₀ = 410 / 1.26 = 325.40N
Note 2) Based on the weight of resin retainer
Note 3) Dimension : mm

| SBR ALUMINUM CASE UNIT OPEN |



Aluminum Case Unit(Open type)	SBR	20	UU	-	A	S
Nominal Shaft Diameter						
Seal	Blank : No Seal U : One Side Seal UU : Both Side Seal					
Retainer	Blank : Resin retainer(Standard) A : Steel retainer(High temperature)					
Ball type (by corrosion resistance)	Blank : High carbon bearing steel ball (standard) S : Stainless steel ball					

PART NUMBER	L/B	D	W	G	θ	A	M	S×Q	h	E	J	K	BASIC LOAD RATING(N) DYNAMIC(C)	STATIC(Cs)	WEIGHT (gf)
SBR16UU	LM16UUOP	22.5	45	33	80°	9	45	M5×12	11	20	32	30	770	1170	0.15
SBR20UU	LM20UUOP	24	48	39	60°	11	50	M6×12	11	23	35	35	860	1370	0.20
SBR25UU	LM25UUOP	30	60	47	50°	14	65	M6×12	12	27	40	40	980	1560	0.45
SBR30UU	LM30UUOP	35	70	56	50°	15	70	M8×18	15	33	50	50	1560	2740	0.63
SBR35UU	LM35UUOP	40	80	63	50°	18	80	M8×18	17	37	55	55	1660	3130	0.92
SBR40UU	LM40UUOP	45	90	72	50°	20	90	M10×20	20	42	65	65	2150	4010	1.33
SBR50UU	LM50UUOP	60	120	91	50°	25	110	M10×20	25	53	94	80	3820	7930	3.00

Note 1) Dynamic load rating is based on the nominal life of 50km.
In case of 100km, C on the table need to be divided by 1.26
Ex) LM12 s 50km basis dynamic load rating C = 410N
LM12 s 100km basis dynamic load rating C₁₀₀ = 410 / 1.26 = 325.40N
Note 2) Based on the weight of resin retainer
Note 3) Dimension : mm